

The Clayton/Deer Park Historical Society is a group of individuals dedicated to the preservation of the history of the area just north of Spokane, Washington. The Society collects oral, literary, and pictorial history to publish and otherwise make accessible to the public.

The Clayton/Deer Park Historical Society meets on the second Saturday of each month at 9 AM. We gather at the Clayton Drive-In, located just off Highway 395 on Railroad Ave.

THE
CLAYTON/DEER PARK
HISTORICAL SOCIETY
Mortarboard

All Rights To This Material Reserved By C/DPHS

THE LOON LAKE SCHOOL DISTRICT

By: Lorinda Travis

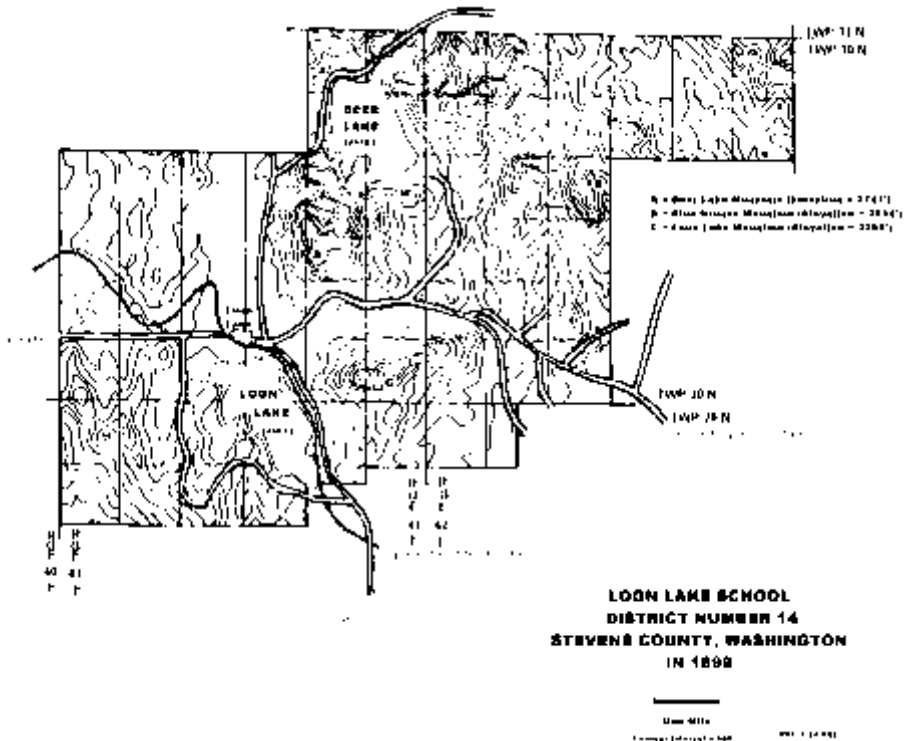


Figure 1: Contour map of the Loon Lake School District Number 14 when it was formed in 1889. The contour interval of this map is 100 feet and the closeness of these contours shows how mountainous the original school district is.

Free — Take One

The Loon Lake School District was formed by Superintendent Peter J. Niven on May 6, 1889. It was originally called Loon Lake School District #14. In 1887, an attempt was made to organize a school but that failed (Naff, 1984, p.58). The school district was formed prior to any town being platted and was one of the first signs that people planned on staying in this area. The 1889 construction of the Spokane Falls and Northern Railroad through the Loon Lake area brought settlers and more children into the Loon Lake area. Land was donated for a school by Andrew Solokar and a log school building constructed (Naff, 1984, p. 58). One of the earliest settlers in the area, Charles Arnold was appointed as a director. There were 89 school age

children living within the boundaries of the Loon Lake District when it was formed.

The first school building used by Loon lake students was a log structure. In 1894, the log building was replaced by a two story building.. In the beginning, the students were in the rooms on the lower level and the upper level was used as a gymnasium. Somewhat later the stairs were moved from the center of the building to the side and a covered porch was added. There was no indoor plumbing in this facility. Water was available a couple of blocks away until a hand pump was installed on the school grounds in 1912.



Figure 2: The 1894 Loon Lake School house that replaced the log structure. (Loon Lake Historical Society)

(Continued on page 531)

(Continued from page 530)

Many children walked to school but Inez Swope McKeehen wrote in 1995 about her father, Archie Swope, operating a school bus (in the form of a covered wagon) from 1904 until 1925.

"My daddy used to tell me stories about driving the school bus. He used to drive up to pick up the Garrison girls at Horr's Spur. Frank Kemp used to walk up to the top of the hill and catch daddy up there. Then he'd get to drive the horses to school. Sometimes daddy would stop the horses and the kids would get out of the wagon and pick flowers."

The district would go through many changes. One occurred in 1903 when much of the area of the district was transferred to the Gardenspot District. Loon Lake School District changed from #14 to #83 when it was consolidated with Deer Lake School District #121 in 1921. In 1929, Pine Grove School District was transferred into Loon Lake and the Loon Lake School District became number 183 (Naff, 1984, p.58).

In 1929, the district tore down the wooden structure and replaced it with a brick building with indoor plumbing. Total cost for this new school house was \$8,000. In the early days, two classrooms were on



Figure 3: The 1929 Loon Lake School house as it appears today as the location of the Loon Lake Historical Society. (Photograph from the home page of the Loon Lake Historical Society's web page)

(Continued on page 532)

(Continued from page 531)

the upper floor and the lower floor was used for a lunchroom and multipurpose area. Throughout the years, many community dances were held in the basement, until it was needed for additional classrooms and walls were installed. When student enrollment continued to increase, the district added two portable units behind the brick building. But the growth continued.

One hundred years after the formation of the district, it was determined that a new building was again needed for the children. Construction was completed and the students moved in during April of 1992. The new building had the capability for a classroom for every grade level. In addition some of the classrooms were designed to open and expand into one large classroom. There is also a

1,200 square foot library, a full service kitchen and lunchroom, a gymnasium large enough to hold three separate volley ball courts, a special science/art room and a computer lab.

The Old Schoolhouse was purchased in 1993 by the Loon Lake Historical Society and volunteers spent many hours restoring the building to its original condition. It is again used by the community for a variety of activities. To learn more about the history of this area, come visit the History room in the Old Schoolhouse.

REFERENCES CITED

Naff, Alpha, 1984, *The Last Bell*: Colville, Washington, Don's Printery, 152 p.

THE RENSHAW FAMILY OF DEER PARK

By Marie Renshaw Stephenson

In approximately 1889, the Renshaw family became part of early Deer Park when Samuel C. Renshaw, his wife Mary (Bowie), and their nine children moved to Deer Park from Harrison County, Iowa. Samuel was born on June 1, 1839 in Lancaster, Ohio to Joseph and Hannah Renshaw and was one of seven children. The family moved to Ottawa, Ohio (southwest of Toledo) where two more children were born. Family history indicates that Hannah probably died there in childbirth.

Right : Figure 1: An early picture of Mary Ann Bowie. She was born in 1844 in Ohio and died on January 3, 1906 in Deer Park.

(Renshaw Family Photograph)



In 1851, at the age of 12, Samuel left home to work as many children did at that time. Shortly thereafter his mother died and he probably didn't find out that for some time. In 1859, the now twenty year old Samuel was living in Chillicothe, Ohio about fifty miles south of Columbus and working on the railroad. On November 28, 1859, he married Mary Bowie in Chillicothe.

The Civil War began in April of 1861 and both Samuel and his father enlisted in the Union Army. Joseph was wounded in the hand at the Battle of Stones River, Tennessee (December 31, 1862-January 2, 1863). The battle site is located about 25 miles southeast of Nashville. From there Joseph, and the Union Army of the West, partici-

(Continued on page 533)



parted in General William T. Sherman's march through Georgia to the sea. Both father and son kept re-enlisting until the war was over. When Samuel's Army enlistment was up he re-enlisted in the Navy and was stationed on the ship General Putnum.

After the Civil War ended, Samuel and Mary stayed in Chillicothe long enough to have a son, Samuel Jr., born in 1867. After Samuel Jr. was born, they moved to Toledo and Lima, Ohio for a couple of years each. By the time they moved further west to Harrison County, Iowa, they had nine children: Samuel Jr., Jennie, Harry, Carrie, Charlie, Albert, Ed, Everett, and Irving.

In approximately 1889, the Samuel C. Renshaw family arrived in Deer Park. At this time, the Spokane Falls and Northern railroad was being built and William Short and George Crawford were cutting lumber on a rented portable sawmill just west of what would become downtown Deer Park. A Renshaw family scrapbook photo-

Left: Figure 2: Samuel Renshaw in a navy uniform. The Saint Mary (Kelly) Cemetery marker on his grave in Deer Park indicates he was a member of Company I, 82nd Ohio Infantry as well as the Navy. (Renshaw Family Photograph)

Right: Figure 3: A photograph of Samuel and Emma Renshaw in front of what may have been the first lumber house in Deer Park. It was built early in the 1890's and this photograph shows that it had recently been added to at the rear. (Renshaw Family Photograph)



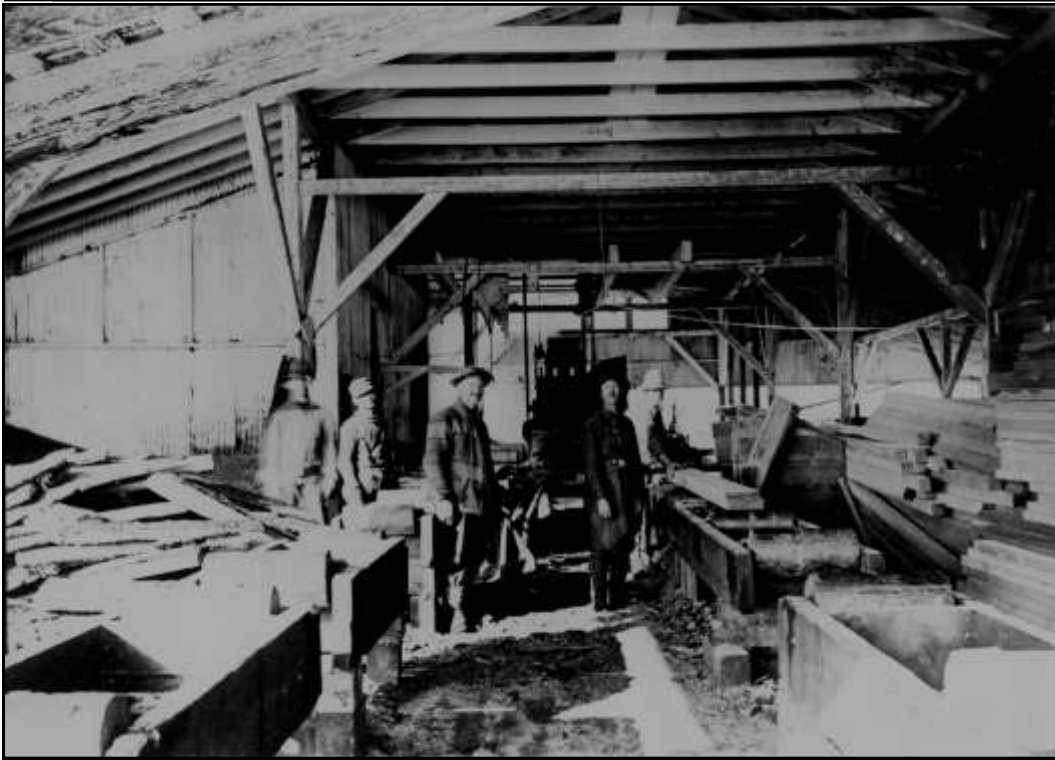


Figure 4: A photograph taken inside the early Short sawmill. None of the men is identified in this picture but I think several are Renshaws. (Lawrence Zimmerer Photograph Collection)

(Continued from page 533)

graph shows Samuel Jr. and Emma (Green) Renshaw in front of a small lumber house.

Family lore indicates that this was the first house in Deer Park built of lumber and not logs. Besides his own family, two of Samuel's sisters, Lydia Renshaw and Sirene (Renshaw) Murphy moved to Deer Park. Lydia moved to Deer Park in 1889. Sirene Murphy had married and moved from Michigan, had a child and was widowed before moving to Deer Park just before 1900. Emma Renshaw died in 1906 and Samuel C. Renshaw died in 1919.

The Renshaw boys all worked at the Standard Lumber Mill owned by William Short. Other families that worked there were the Wiese's and the Koch's.

Lillie Wiese was my Grandmother's sister. My father's sisters married two brothers (Ethel Renshaw married Johnnie Koch, Hazel Renshaw married Joseph Koch) and a Koch cousin (Pearl Renshaw married Mike Reidt who was a brother of Rose Koch). The Deer Park Union newspapers from 1911 into the 1920s contain many articles with the names of Renshaw family members in them. The Renshaw family was an important part of the early Deer Park community. Many descendants of these families still live in and around the Deer Park and Denison.

(Continued on page 535)

(Continued from page 534)

REFERENCES

Kennedy, F. H. (ed.), 1990, The Civil War battle-field guide: Boston, Houghton Mifflin Company, 317 p.



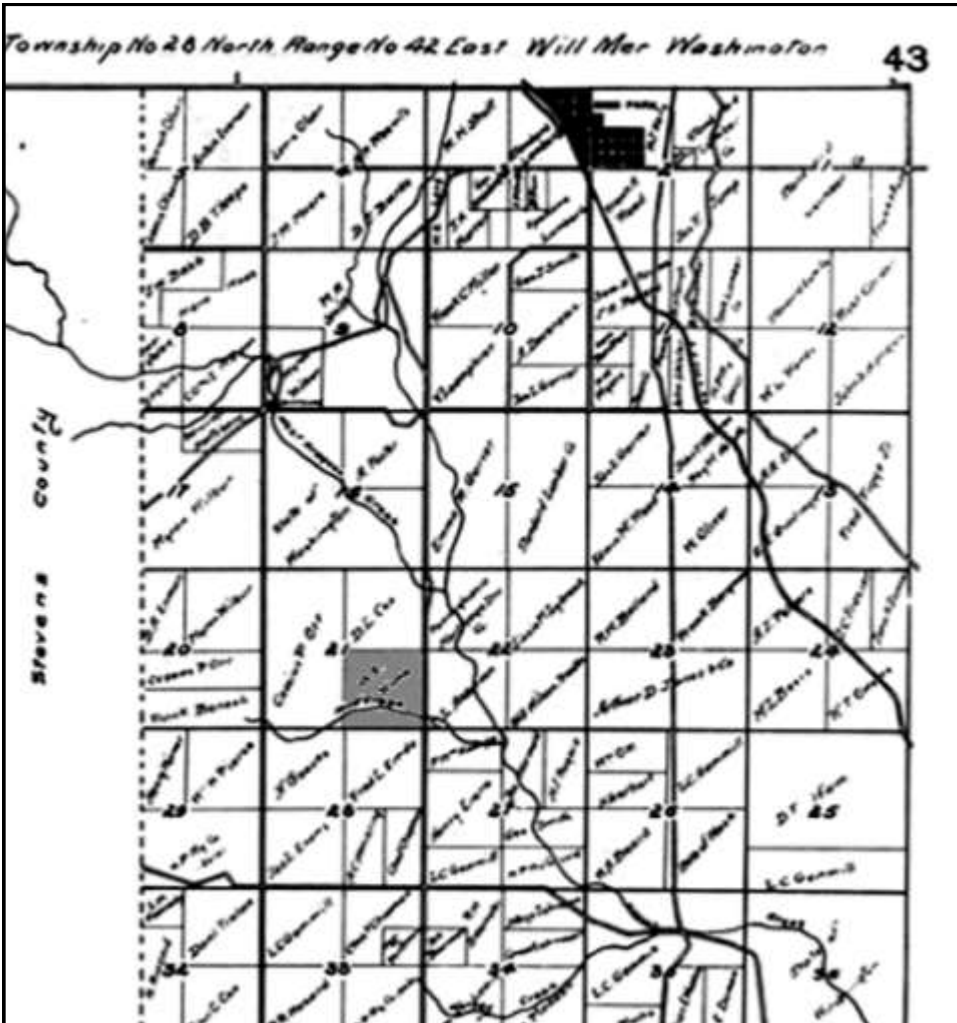
Figure 5: The Renshaw house at 411 North Main Avenue in Deer Park in August 2011. This house was built by the Renshaw family in 1910. (*Peter Coffin photograph*)

Editors Corner

I received the following e-mail in October:

"My name is Fran Graham. I'm looking for family history in Deer Park. My great grandmother Miss

Mable Kime, who then met and married grandpa Clark I believe in Deer Park. My mother Glenda Clark was born to Ellis and Elsie Clark in 1941 in



U.S., Indexed County Land Ownership Maps, 1905 record for W.E. Kime (Denison is only about 3 miles south of Deer Park, however, considerable area was recorded as Denison, see light shaded area on map for location of W.E. Kime property in 1905. Deer Park is dark shaded blocks at the top.)

(Continued from page 536)

Deer Park. I believe my family goes back some there, and would like to find out more if I could. I seen your last name and was just hoping. “

I did a couple of hours of research and I was able to send back this information:

1930 Census: Ellis F. Clark Home in 1930 in Denison, Spokane, Washington; Age 18 Estimated Birth year about 1912, Son of Clifford J. Clark and Mabel E. Clark. Also mentioned Marlin F. Clark Age 12, Vera L. Clark Age 6, and William E. Kime Age 70.

1920 Census: Ellis F Clark Home in 1920, Walkers Prairie, Stevens Co., Washington, Age 7, Son of Clifford J Clark and Mabel E. Clark Other children: Blanche B Clark, Marlin V Clark

1910 Census: Clifford J Clark Home in 1910, Deer Park, Spokane, Washington, Single, Age 33, Esti-

mated birth year: 1877. Living with his married brother, Eugene H. Clark and wife: Catharine L. Clark, nephews Daniel H. Clark and Cecil M. Clark.

Ingalls Eggenberger Family Tree: Clifford J Clark born 28 Oct 1878, Newfield, Oceana, Michigan, Parents: Lucius Clark 1821 and Sarah A. Cott.

Bain Family Tree: Mable Kime 1894-1978 daughter of William E. Kime 1860 and Laura Cockem.

Today, I decided to do more research and found further information that I will send to Fran as well as the map on the opposite page. The Kimes were in Sharon Springs, Wallace, Kansas in 1900 and appeared there on the 1895 Kansas State Census. I haven't located the marriage of Mable Kime and Clifford Clark but it seems likely to be in Deer Park. *Sharon Clark, editor*

Calendar of Events

Event	Date & Time	Location
C/DPHS meeting	November 12, 2011, 9:00am December 10, 2012, 9:00am January 14, 2012, 9:00am	Clayton Drive-In
Winter Fest <i>Display of Memorabilia</i>	January 21, 2012	Deer Park Community Arts Center
Old Settlers Picnic <i>Display at Mix Park</i>	July 28, 2012*	Deer Park Mix Park
Clayton Brickyard Day <i>Display of Memorabilia</i>	August 4, 2012*	Clayton Grange Hall
Clayton Fair <i>Display of Memorabilia</i>	August 24, 25, 26, 2012*	Clayton Fairgrounds

* projected dates

Clayton/ Deer Park Historical Society Minutes — October 8, 2011

In attendance: Don Reiter, Mary-Jo Reiter, Marilyn Reilly, Warren Nord, Lorraine Nord, Mark Wagner, Betty Burdette, Marilyn Reilly, Sharon Clark, Pete Coffin, Judy Francis, Bob Clouse, Allan Fackenthall, Lynn Fackenthall Wells, Bill Sebright, Grace Hubal, Duane Costa, Bob Gibson, Karen Meyer, Cliff Meyer.

Society president, Bill Sebright called the meeting to order at 9:00 AM. Bill talked about and showed: 1) eight pictures of Deer Park Elementary School students and staff. They came from Joan Williams Easley and are from the 1940s. 2) We received dues from Minnie and Glenn Hayworth. They used the membership form from the Society's cookbook. 3) We received a \$100 donation from Sharon Akers in Pete Coffin's name. 4) Betty Burdette donated a bowl and pitcher from the Olson Hotel in Deer Park. It was given to her by Lena Wolf Olson in the 1980s. It was put in the display cabinet at the Clayton Drive-In.

Treasurer, Mark Wagner reported that there is \$3,106.23 in the main checking account. Checking account activity: \$213.00 in deposits; checks written -Sharon Clark for \$136.95 for supplies.

Secretary, Grace Hubal reported that 5 cookbooks were sold, \$50 collected. Clayton Drive-In has 4, Bill has 3, and Grace has 3 cookbooks. That makes 10 cookbooks on hand to sell.

After last month's meeting several members talked about money-making projects. Grace did some research on a simple white t-shirt with the eagle's picture and the words Clayton/Deer Park Historical Society on the front. She emailed Denny Lippert regarding the t-shirts and is yet to hear from him. Bill called Denny and left a message in case he didn't open her email. Betty Burdette said that the Lipperts have been on vacation. Discussion followed. Betty Burdette dis-

cussed a community benefit dinner at the Eagles or the VFW in Deer Park.

Print Editor, Sharon Clark handed Mortarboard #42. The Collected Newsletters of the Clayton/Deer Park Historical Society-- Volume Eleven is now available for \$4.

Vice President, Pete Coffin reported that: 1. At last month's meeting he calculated a rough estimate of what the yearly society expenses might be based on the last years check book payments. The itemized list of re-occurring expenses he made follows:

Chamber of Commerce Membership	\$50.00
Printing Supplies	\$136.95
Printing Supplies	\$125.19
Chamber of Commerce Membership	\$50.00
Printing Supplies	\$74.94
Heritage Network Membership	\$20.00
Liability Insurance	\$690.19.
Printing Supplies	<u>\$113.58</u>
Total	1,260.85.

(Note that this is not for a full year and more printing expenses can be expected. In addition, the second \$50.00 for Chamber of Commerce dues needs to be explained.)

Grace Hubal brought to my attention that the itemized list above did not include the new website costs as they came out of a special account that I did not see in my review. That expense will amount to \$173.40 for a full year. Including this and consolidating expense categories a shortened yearly expense budget could be as follows:

New Website Costs	\$200
Liability Insurance	700
Printing supplies	500

Clayton/Deer Park Historical Society
Newsletter — Issue # 43 (November) — 2011

(Continued from page 538)

Chamber of Commerce Dues	50
Heritage Network Dues	20
Contingency Fund	<u>200</u>
Total	\$1,670

Given that the membership dues of \$20 per family ideally brings in only \$580 per year (29 listed members times \$20 = \$580) over \$1000 per year will have to be generated to keep the society solvent.

The two 9 inch reels of 35 mm film donated to the Society by the Reiter family have been unwound, all the specific subject film clips have had portions scanned (about 10 frames each) and a rough re-construction of the story the films told made. A printed summary of the techniques used and samples of the scanned pictures was circulated during the meeting. The story about the orchard is partly a sales pitch for purchasing acreage and a short travelogue describing Spokane and the construction of the orchard. No decision has been made as to attempting to have the films digitized at a cost estimated to be between \$500 and \$1000.

Webmaster, Penny Hutten reported on the new website: On Saturday October 1, 2011, she met with Jake Wilson, Grace Hubal, and Pete Coffin to review progress on the transfer of material from the claytondeerparkhistori-

calsociety.com web site to the CDPHS.org website. Jake reported that about 50% of the material has been transferred. There are three months left on the old website contract to get the rest of the material transferred. Penny and Peter volunteered to

help in the transfer if time becomes short. Jake is enrolled in several college level courses this quarter and will be busy until December and the quarter break. He feels that December will give him the time to finish the transfer Jake provided a show-and-tell of how to enter the new website as an editor. It is considerably more complicated than the original website. It will require some practice to become a proficient editor on this new website. Penny is willing to continue to be the webmaster when Jake finishes his new site. Cost of the new website was discussed. The accounting page that Jake showed the group had an initial payment of \$54.00 with \$9.95 monthly charges. Thus the first year will cost \$119.40 (12 monthly charges of \$9.95) plus the \$54.00 for a total of \$173.40. The website provider offers an automatic backup plan of \$12.95 per year that the group thought was a good idea and would like the full board and the society members to approve this increased expenditure. Penny moved and Sharon Clark seconded that we

spend the \$12.95 a year to back up the website. It was unanimously approved.

Pete brought us up-to-date on the status of the Deer Park Chamber of Commerce magazine. No change since last month.

Clayton Brickyard Day was discussed. Bill had talked to Wilma Calicoat, Howard Richards, and Denise Wheeler, from then Spokane Valley.

We will have our history display in the downstairs of the Grange Hall. It will cost us about \$60 rather than the \$230 at the Clayton School. Wilma had told Bill she would have the barbeque there also,

(Continued on page 540)



Website Committee Meeting. Penny Hutten, Jake Wilson and Grace Hubal. Peter Coffin Photo

(Continued from page 539)

but has changed her mind. He isn't sure where she will have the barbeque, or if she will have the barbeque. Betty Burdette moved and Pete Coffin seconded that we rent a space at the Clayton Grange for Clayton Brickyard Day in 2012. It was unanimously approved.

Pete also reported on the Renshaw Family of Deer Park---Marie Renshaw Stephenson. This will be a future article in the Mortarboard.

Next meeting: November 12, 2011

Meeting adjourned at 9:54 AM

Respectfully submitted by Grace Hubal, Secretary

Editorial Policy Regarding Correcting Errors and/or Omissions

Information published here is compiled from many sources, including personal memories. It is often difficult or impossible to verify such recollections through outside documentation. Our editorial policy toward the veracity of personal recollections tends toward the casual – since little harm is normally done by such errors. But our editorial process also invites public review and input regarding the accuracy of the information we publish, and when such review either suggests or reveals errors or items open to dispute our “Letters” department will act as a forum allowing the airing of such disagreements in an effort to ascertain the truth and correct any probable or demonstrated errors. We also believe it’s important that such disagreements be recorded, even if they can’t be settled to the satisfaction of all parties.

We encourage everyone to submit any arguments as to fact to the editor in writing — since the written form reduces the chance of further misunderstandings. As is standard policy, all letters will be edited for spelling, word usage, clarity, and — if necessary — contents. If advisable, the editor will confer directly with the letter writers to insure that everyone’s comments and corrections are submitted in a literate, polite, and compelling manner — as best suits the editorial image of this Society’s publications.

Society Want Ads

WANTED: Information and photos regarding the history of Trysil/Zion Lutheran Church

WANTED: Any stories and photos of your family’s history in connection with their occupations and settlement in the Clayton/Deer Park

Area

WANTED: Any stories and photos from Williams Valley #452 and Gardenspot #278 Granges

WANTED: Any information on the Williams Valley Grange Orchestra
Contact: Ann Fackenthal, WVG

(Rollosdotter@gmail.com) 466-3564.

FOR SALE: The 2011 Clayton/Deer Park Historical Society Cookbook, “A Collection of Recipes and Stories” (see our ad on page 524 for details)

Society Contacts

C/DPHS, Box 293, Clayton, WA 99110

Bill Sebright, president — (sebrightba@wildblue.net)

Peter Coffin, vice president — (pcffn@q.com)

Sharon Clark, editor — (sharonclark@centurytel.net)

Grace Hubal, secretary — (hubals@msn.com)

Special Thanks to this month's volunteer proofreaders — Charles Stewart, Grace Hubal