

The C/DPHS is an association of individuals dedicated to the preservation of the history of our community. To the preservation of the region's oral history, literary history, social history, graphic and pictorial history, and our history as represented by the region's artifacts and structures. To the preservation of this history for future generations. To the art of making this common heritage accessible to the public. And to the act of collaborating with other individuals and organizations sharing similar goals.

THE
CLAYTON/DEER PARK
HISTORICAL SOCIETY

Mortarboard

All Rights To This Material Reserved By C/DPHS

Historic Deer Park's City Center By Peter Coffin

The historic (and present!) city center of Deer Park is the intersection of the north-south Main Avenue and the east-west Crawford Street and the four blocks surrounding this intersection. In 1902, Peter Kelly finished construction of the first substantial brick one story commercial

building in Deer Park on the northwest corner of this intersection. This original building is pictured in the book "Spokane and the Inland Northwest-Historical Images-" (Bamonte & Bamonte, 1999, p.176) and shown below.

Free — Take One



Photograph 1: People's Supply on January 11, 1902 at the northwest corner of Main Avenue and Crawford Street. Peter Kelly is the bearded man in the doorway and his partner, Joseph A. Reuthinger is to the right of the column. (Bamonte Photograph)

(Continued on page 254)

(Continued from page 253)

From this building the west side of Main Avenue developed northward with brick and more substantial wooden frame structures replacing the wooden, false fronted buildings seen in Photograph 1 behind the horse drawn sleigh. Most, if not all of these replacement brick buildings are still standing and housing businesses in 2009.

Many later pictures of what I will call the “Kelly Building” have been preserved in the Lawrence Zimmerer Collection. One of the earliest Kelly Building pictures in this collection may have been taken from a tree prior to

1908 and after the completion of the second storey expansion of the Kelly Building. Photograph 2 is a view west along Crawford Street with the two storey Kelly Building in the upper right and the Kelly residence on the right center. Other significant buildings no longer present today are the Olson Mercantile on the southeast corner of Main and Crawford (replaced by the present hotel building) and Jeff Moore’s Saloon across Main Avenue with the OK Restaurant barely visible behind it. Across the railroad tracks the white two storey is the Commercial Hotel.

Another Lawrence Zimmerer Collection photo-



Photograph 2: West along Crawford Street across Main Avenue prior to 1908. This picture is prominently reproduced on the wall in Yoke’s Grocery Store on South Main Avenue. (Lawrence Zimmerer Photograph Collection)

(Continued on page 255)



Photograph 3: The Kelly Store with the railroad tracks, station and water tower just west across Railroad Avenue about 1908. Note that the railroad rails have no tie plates with the rails spiked directly to the ties. (Lawrence Zimmerer Photograph Collection)

(Continued from page 254)

graph taken from the southwest prior to 1910, shows the Spokane Falls and Northern Railroad's station and water tower behind the Kelly Building. Note that the Kelly Building has no signage painted on its walls. Peter Kelly died in 1908 and his son O. F. Kelly inherited the business. All the later pictures (into the 1920s) show large, approximately four foot tall painted signs advertising the range of goods available in O.F. Kelly's "General Store."

Photograph 4 was taken from the southeast in about 1920 shows most of the buildings presently standing in 2009 on the west side of Main Avenue. The Sanborn Map (Map 1) below Photograph 4 is not precisely datable because of drafting modifications after the 1915 original drafting but is probably a fair representation of the 1915 business district on the west side of Main Avenue.

Map 1 labels the Kelly Building's first floor as

(Continued on page 257)



Photograph 4: The Kelly Building in about 1920 with the painted signs. (*Lawrence Zimmerer Photograph Collection*)



Map 1: The Sanborn Fire Insurance map of the first block north of Crawford between Main Avenue and Railroad Avenue. East is up on this map and north is to the left.

Clayton/Deer Park Historical Society
Newsletter — Issue # 20 (December) — 2009

(Continued from page 255)

being occupied by a general merchandise business and a printing shop (possibly the Deer Park Union?). The second floor is labeled as a Knights of Pythias meeting hall. Northward is



Photograph 5: South on Main Avenue in August 2009. (Peter Coffin photograph)

the post office, a sausage factory with a smoke house in the rear, a restaurant (labeled “LODGS 2nd”) with apartments on the second floor, a pool hall/tobacco store, another general merchandise store, and on the northeast end a drug store. Since 1915 the buildings have remained much as built with only front façade remodeling and, of course, many changes of the occupying business.

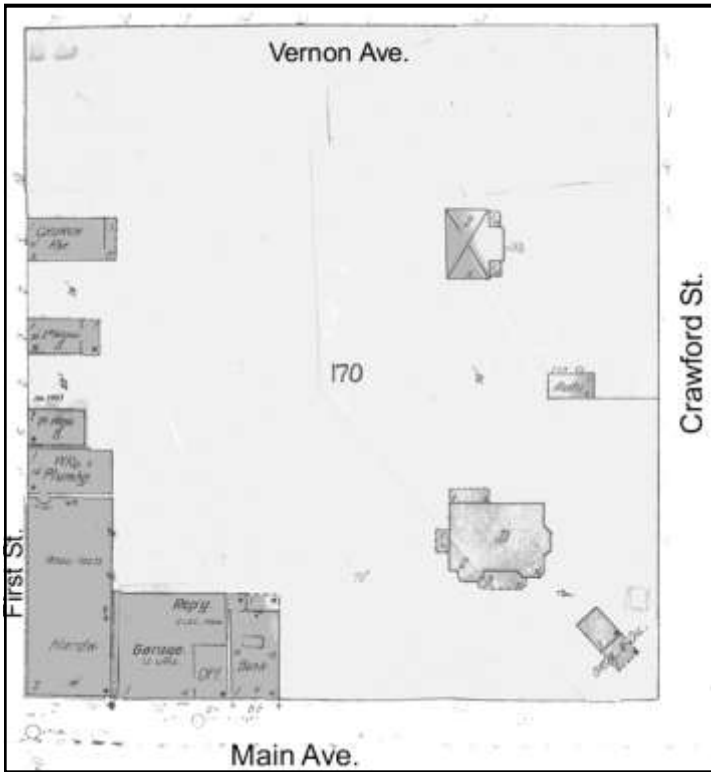
Photograph 5 was taken from the north end of the block in August 2009 and shows the building fronts as they presently look.

The Lawrence Zimmerer Collection does not have a 1910-1915 picture of the east side of Main Avenue but a 1926 photograph shows most of the early buildings as they probably appeared in the period from 1910 to 1920. All of these buildings that I was familiar with in



Photograph 6: Looking south on Main Avenue in 1926. The brick building on the left behind the “Bakery” sign is a hardware store on the northwest corner of First and Main with the lighter colored building further south either a bank or an automobile repair garage. The large trees are in the Kelly residence yard and the brick building in the distance is the hotel. (Photograph courtesy of Susan Wind-Simpson)

(Continued on page 258)



framed automobile repair shop just to the south. Further south is a brick bank building.

Almost all of the buildings on this block have been replaced. Charles Yoke built a grocery store on the southwest corner of the block in late 1968 that is now a NAPA auto parts store. The Kelly house was moved away to southeast Deer Park to a lot on C Street near the present Middle School and the other three buildings fronting on Main Avenue were razed and with a Bank of America and its parking lot constructed on the northwest corner of this block. A winter scene is shown in Photograph 7 looking north from the corner of Main and Crawford along the east side of Main.

Map 2: The Sanborn Fire Insurance map of the first block north of Crawford Street between Main and Vernon Avenues. North is to the left and east is up. The building marked “D” is the Kelly residence.

South of this block, across Crawford, many of the early

(Continued from page 257)

the 1940s and 1950s have been razed and replaced.

Map 2 is the Sanborn map of the full city block east of Main Avenue and north of Crawford Street. This map shows a gas and oil service station in front of the Kelly residence shown on Photograph 2. On the northwest corner of the block is a brick hardware store with a wood

Photograph 7: A winter scene looking north on main Avenue towards the brick building on the southeast corner of Main Avenue and First Street. To the right is the Kelly residence and a corner of the hotel/Mix drug store.



(Continued on page 259)

(Continued from page 258)

buildings still are standing and in use in 2009. Photo graph 8 was taken at street level looking west on Crawford after 1909 because the brick hotel building on the left has been completed, both the first storey and the upper two stories.

Map 3 shows the hotel and movie house on the north and west side of the block with the



Photograph 8: Looking west along Crawford past the new hotel on the left, the Kelly Building on the right towards the light colored Commercial Hotel seen over the boxcar on the railroad tracks. This photograph was taken after 1908 and the completion of the hotel building. (Lawrence Zimmerer Collection)



Map 3: A Sanborn Fire Insurance map of the business block southeast of the Main Avenue - Crawford Street intersection. North is to the left and east is up.

Deer Park Motor Company Garage on the southwest corner. The southernmost building between the Hotel and the Deer Park Motor Garage has been razed and the old Arcadia Orchard Company office has been expanded and remodeled and now contains insurance and accounting offices. The small building labeled "Off.", "conclks" is still standing and in the 1950's was the office for the Inland Power and Light Company and has recently

(Continued on page 260)



Photograph 9: North on Main Avenue past the Arcadia Orchards office and the hotel in1912. (From Wallace Parker and the C/DPHS Collection)



Photograph 10: The Deer Park Motor Company Garage building in August of 2009. This building had been a automobile repair shop for years until recently when it became a second hand shop. (Peter Coffin Photograph)

been an insurance company business. The three other houses east of this building are still standing in 2009 and are in use as residences or offices.

The building in the space between the hotel and the garage marked “Off.” and “Stge.” was originally the Olaf Olson construction offices. During the years of the Arcadia Orchards Company operations it was the Deer Park office.

The “Deer Park Motor Company Garage” is little changed from the original construction and is shown in Photograph 8 taken in August of 2009. During the 1950’s it was owned by

(Continued on page 261)

(Continued from page 260)

Fred Reynolds and was a automobile/truck/farm equipment repair shop and the home of the Deer Park Auto Freight. Only recently was it remodeled into a pawn/second hand business.

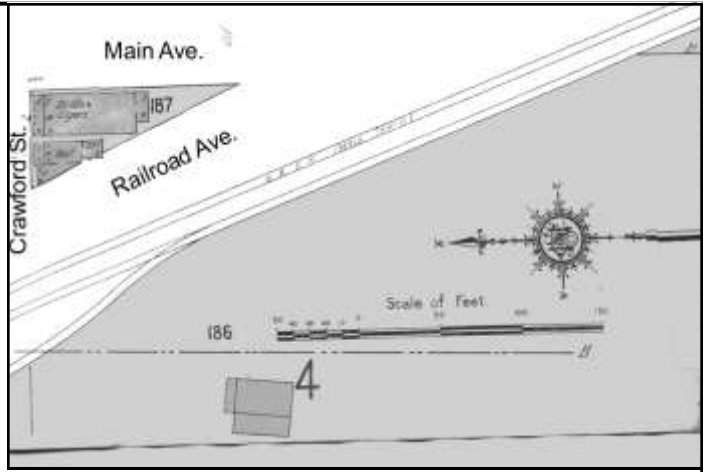
Map 4 shows the triangular portion of the city block southwest of the corner of Main Avenue and Crawford Street. The building marked "Bill'ds & Cigars" was Jeff Moore's Saloon, the small building west of it is marked "Rest" and is the OK Restaurant. My father, "Jack" Coffin told me that my grandmother, Kate Coffin, and one of my aunts worked there in the 1920s

after his father E.C. Coffin died. At present an automobile repair building occupies the site with none of the original buildings left.

Photograph 8 shows the backside of Jeff Moore's saloon and Photograph 2 shows the front of the same building. At this time I have



Photograph 11: North on Main Avenue sometime after 1908 and the completion of the main portion of the hotel. (Lawrence Zimmerer Collection)



Map 4: The Sanborn Fire Insurance map of the triangular block on the southwest corner of Main Avenue and Crawford Street. North is to the left and up is east.

no pictures of the OK Restaurant. In the distance just right of center the brick south wall of either the bank or hardware store at the southeast corner of Main Avenue and First Street can be seen.

As the photographs in this essay show much of Deer Park, Washington's downtown center has changed relatively little since the main buildings were built in the period from 1900 to 1920. The largest changes were made to the east side of Main Avenue from Crawford to First Street where the entire block was razed and rebuilt in the period from 1960 to 1970.

References Cited

Bamonte, T. & Bamonte S. S., 1999, Spokane and the Inland Northwest -Historical Images-: Spokane, WA, Tornado Creek Publications, 335 p.

Anon., 1940, Fire Insurance Map of Deer Park: San Francisco, Sanborn Map Company 5 p. (Original base maps drafted Sept. 1915)

VETERANS WERE HONORED

Cold and a steady drizzle didn't prevent more than two dozen people from honoring our veterans (especially those of Norwegian heritage) on Sunday, November 8, 2009. The ceremony was held at the Zion Hill Cemetery near Clayton, Washington.

(Flag raising picture) Bugler- John P. Kowzan, Lieutenant Colonel, U. S. Army, Retired, Parker Molstad II, Richard Tufte-land, Jay Wood (In VFW Hat), and SFC Allen Ashworth.

The United States and Norwegian flags were raised. A very moving version of Taps was played by U. S. Army Reserve bugler, John P. Kowzan, Lieutenant Colonel, Retired, after the flag raising. Deer Park's SFC Allen Ashworth of the U. S. Army and Jay Wood of Deer Park Veteran of Foreign Wars Post were among those who took part in the ceremony.

Members of the Spokane Sons of Norway lodge, Deer Park VFW, Zion Lutheran Church, and Clayton/ Deer Park Historical Society were present for the service honoring our veterans.
Bill Sebright, reporting



Clayton/ Deer Park Historical Society Minutes, Nov. 14, 2009

In attendance: Bill Sebright, Mark Wagner, Sharon Clark, Grace Hubal, Marilyn Reilly, Warren Nord, Lorraine Nord, Pete Coffin, Betty Burdette, Bob Clouse, Mary Clouse, Anne and Mel Molstad (Sons of Norway), Bob Gibson, Tom Gardner, Mary Ann Longeway, Don Ball, and Lorraine Ball.

Society president Bill Sebright called the meeting to order at 09:08 AM.

Mark reported that there is \$1,663.54 in checking. Account activity: \$114.95 paid out for supplies; deposits \$229—\$200 of which was a donation from Karen Meyer. Thank you, Karen

Sharon Clark, Editor, brought The Mill town Buckeye, Washington and Surrounding Area 1889-1912 book for the Society to use. Bob Clouse borrowed it. Also, she brought two abstract Titles for the Williams Valley area.

Clayton/ Deer Park Historical Society Minutes, Nov. 14, 2009 (Continued)

Her brother and sister-in-law gave her a picture of Arcadia Orchard office and a brochure of Deer Park businesses, circa 1920. Pete will scan them. Sharon handed out Mortarboard #19 to all.

Bob Clouse, Webmaster, stated that in September there were 1510 hits and in October 1958 hits on our website. This was another new record. Bob got in touch with the Wells Fargo main office in San Francisco. One of the big guns complimented us on our website. Mortarboards 18 and 19 are posted. Back-up disc packets were given to Grace, Pete, Sharon, and Bill. Bob Clouse reported that the field trip to the Raspberry Ridge Retreat center is postponed until the spring. He hopes that more people will be able to go then. Doug & Candy Gintz will set up refreshments.

Pete Coffin had four pages scanned of the 1910 Clayton Critic newspaper that he got Vera Spaulding. Bill passed around Pete's Deer Park Tribune article about Deer Park's Oldest Cemetery. Terry Keogh and Dennis Reilly have information on the cemetery from their childhood memories.

Marilyn Reilly talked about the Catholic Cemetery on 6th & Colville Streets in Deer Park. About 12 graves will have to be moved because the city will be widening the Colville. The new Catholic Church will be built east of there.

Bill reported that Marie Stauffer at Standen Insurance sent a quote of \$639.06 a year for general liability insurance. It can be financed with a down payment of \$253.52 and 9 monthly payments of \$47.16. This does not include Directors and Officers Liability cover-

age. This covers mistakes that the executive board might make. The annual premium is \$1324 per year. This insurance includes displays theft, and accidental liability, but not terrorism. Pete asked if there is a single event insurance that we can purchase for Settlers, Clayton Day, and the Fair? Does our incorporation insure us? Does the Clayton-Drive-In's insurance cover us when we have our monthly meetings? When do we start our coverage? These are questions we will have to answer.

Prestini display for August of 2010 was discussed. The display will be at the Clayton Grange. We have already reserved the Grange Hall. Bob Gibson has more easels if we need them. We need to figure out what exhibits we have besides our three Prestini paintings. Warren Nord and Lyle Holcomb have given us permission to borrow their Prestini paintings. Marilyn Reilly and Duane Costa will find out if we can borrow the Prestini painting the Catholic Church owns. We will work on terra cotta and brickyard related displays. Tom Gardner took numerous pictures of Leno's paintings. They should be with the Loon Lake Historical Society. According to Don Gibson, at one time, Leno was the head honcho at the Terra Cotta Plant. We will be checking on this, as no one had heard that before. All were asked to come up with other ideas for displays.

Sharon asked if there was an update on scanning the Owens' Museum material. The Owen family will meet and decide at Thanksgiving time. We hope to have a report at the December meeting.

Betty Burdette stated that we should get a release from the people who loan some of

(Continued on page 264)

(Continued from page 263)

Prestini's memorabilia. This is to make sure the material is covered by insurance, in case of theft or vandalism.

There was a Veteran's ceremony at Zion Hill Cemetery, November 8. The U.S. and Norwegian flags were raised by U.S. Army Honor

Guard, Spokane Sons of Norway, and Deer Park VFW. Bill talked to Jay Wood of the Deer Park VFW. Jay Wood stated that there should be no problem having a color guard at Clayton Day Parade.

Next meeting is December 12, 2009

Meeting adjourned at: 10:07a.m.

Respectfully submitted by Grace Hubal, Secretary

Special Thanks to this month's volunteer proofreaders — Peter Coffin, Grace Hubal, Bill Sebright

Editorial Policy Regarding Correcting Errors and/or Omissions

Information published here is compiled from many sources, including personal memories. It is often difficult or impossible to verify such recollections through outside documentation. Our editorial policy toward the veracity of personal recollections tends toward the casual — since little harm is normally done by such errors. But our editorial process also invites public review and input regarding the accuracy of the information we publish, and when such review either suggests or reveals errors or items open to dispute our "Letters" department will act as a forum allowing the airing of such disagreements in an effort to ascertain the truth and correct any probable or demonstrated errors. We also believe it's important that such disagreements be recorded, even if they can't be settled to the satisfaction of all parties.

We encourage everyone to submit any arguments as to fact to the editor in writing — since the written form reduces the chance of further misunderstandings. As is standard policy, all letters will be edited for spelling, word usage, clarity, and — if necessary — contents. If advisable, the editor will confer directly with the letter writers to insure that everyone's comments and corrections are submitted in a literate, polite, and compelling manner — as best suits the editorial image of this society's publications.

Society Want Ads

WANTED: Leno Prestini artwork. If you have or have access to any paintings, sketches, or sculptures created by Clayton artist Leno Prestini please contact the Society. We would like to feature either the original artwork or photos of the same at next year's Prestini Project showing. For security reasons, the current owners of the materials may remain anonymous if that is their wish.

WANTED: Old family recipes for inclusion in a future Society recipe book. Recipes drawn from any given family's heritage are particularly desired — especially if accompanied by related family stories.

WANTED: Photos of local summer events such as the Old Settlers Picnic and Clayton Days. The photos can be old or new as long as the submitter includes a caption for the photos and has the authority to

permit reproduction of the image in the Society's publications or on the Society's website.

WANTED: Any stories, photos, or examples of traditional methods of quilt making.

WANTED. Your family's story of settlement and early days in Clayton/Deer Park area.

Society Contacts

C/DPHS, Box 293, Clayton, WA 99110

Bill Sebright, society president — (sebrightba@wildblue.com)

Bob Clouse, webmaster — (ramclouse@q.com)

Sharon Clark, editor — (sharonclark@centurytel.net)